

ERC
FIA EUROPEAN RALLY
CHAMPIONSHIP

ERC
JUNIOR

FIA
ERT BALTIC
RALLY
TROPHY



LATVIJAS
AUTOMOBILU
FEDERĀCIJA

LRC
LATVIAN RALLY
CHAMPIONSHIPS
THE PLACE
WHERE YOU WANT
TO RACE!



lvrally.com

**This rally
rocks!**



**RALLY
LIEPĀJA**

TALSI-LIEPĀJA | LATVIA | 2019

**RALLY
GUIDE 1**



FIA GOLDEN RULES

I WANT TO BE SAFE I PROMISE TO

BELT UP

all passengers are my responsibility

RESPECT THE HIGHWAY CODE

rules are there to protect us all

OBEY THE SPEED LIMIT

my car is made of metal, pedestrians and children are not

CHECK MY TYRES

both for wear and for correct inflation, including the spare

DRIVE SOBER

when I am drunk or on drugs, I am a danger on the road

PROTECT MY CHILDREN

keep them safe in car seats

PAY ATTENTION

calling and texting make me dangerous

STOP WHEN I'M TIRED

getting there late is better than not at all

WEAR A HELMET

motorbikes and bicycles don't protect my head

BE COURTEOUS AND CONSIDERATE

respect other drivers

The FIA supports the UN Decade of Action for Road Safety



[Facebook.com/fiaactionforroadsafety](https://www.facebook.com/fiaactionforroadsafety)

www.fia.com/campaigns

Latvijas valsts atbalsts |
Support from State of Latvia



Izglītības un zinātnes ministrija

Rallija pilsēta | Rally City

Liepāja

Partneris | Partner



TALSU NOVADS

Sponsorē | Sponsored by

NESTE

RAMIRENT



Ziņu portāls | News portal

DELFI

Auto nomas partneris |
Car rental partner

SIXT

auto noma

ra
levents
we promote



Organizē | Organised by

Atbalstītāji | Supporters

LOC



SWECON

pafbet
score

Canon
Canon Authorised Center



www.ibserviss.lv

Mediju partneri | Media partners

JCDecaux



GO 4 SPEED

LAIKRAKSTS LIEPĀJAS PILSĒTĀI UN NOVADAM
Kurzemes Vārds

Talsu Vēstis

Palīdz īstenot | In association with



Draugi | Friends

meža dārzs

SPORTLAND

FRISTADS

WORKWEAR



SignTech

BalticTAXI

ANNĒMĒRIS
TÖRLEY
TRADĪCIJAS UN KVALITĀTE NO 1862. GADA

Sils DĀRZA UN MEŽA
TEHNIKAS CENTRS

KURZEME

TIRDZniecības Nams

JĀNIS PŪCE

ZVEHINĀTS ADVOKĀTS

FN'

SERVISS



NARVESEN



ELORA

MAIZNĪCA



TABLE OF CONTENTS

1	Introduction.....	5
2	Contact details.....	10
3	Provisional programme, critical deadlines.....	12
4	Entry details.....	13
5	Scrutineering, marking, and sealing.....	16
6	Qualifying stage/ Shakedown	16
7	Parc Fermé.....	16
8	Service park.....	16
9	Other information to competitors.....	17
10	Media	18
11	Marketing.....	18
12	Festival of speed – Kurzeme	19
13	Rally city – Liepāja.....	20
14	Accommodation.....	23
15	Useful services	24
16	Getting to Rally Liepāja.....	26
17	Emergency contacts	27
18	Useful information.....	28
19	Utilities order form of service area	30
20	Helicopter registration form.....	31

1 INTRODUCTION

1.1 WELCOME NOTE

Welcome to spring, welcome to Liepāja!

After a six-year long trip, with three stops in winter and three stops in autumn, Rally Liepāja has taken a new course, with the 2019 edition of the event taking place in spring.

Rally Liepāja will be the third round of both the FIA European Rally Championship and the FIA ERC Junior championship, being the first to take place in continental Europe! In addition to that, Rally Liepāja will also

host the FIA European Rally Trophy Baltic Rally Trophy, Abarth Rally Cup, as well as two rounds of the Latvian Rally Championship, with Saturday's stages serving as one of them, and Sunday's stages as another. It is also planned that rallysprint, historic sport and historic regularity rally crews will also join the action.

But that is not all – with the rally taking place in spring, we have been able to significantly increase the territory where the stages will take place. The rally will begin on Saturday with special stages taking place in the Talsi region. Whilst the event will conclude on Sunday, with the decisive stages run nearby Liepāja! Our plan is ambitious, difficult, and filled with challenges, but the opportunity to unite the Kurzeme region “golden fund” of special stages is motivation large enough to overcome any issues!

We are organizing Rally Liepāja for the seventh year, but are definitely not alone. European Rally Championship organizer Eurosport Events, the Latvian Automobile Federation, Liepāja city council and Talsi city council – these are partners that we work with to find the energy needed for fulfilling more and more ambitious goals.

Though we cannot control the weather, we hope that it will be warm, making it possible to implement new solutions. At the same time, even though it seems like a lot has changed, there will still be aspects that we have gotten used to – a warm welcome, a friendly rally centre, tough but fair officials and passionate fans at the stages. The rally will begin on Wednesday evening with administrative checks, with the first stages taking place in Talsi on Saturday and the event concluding Sunday in Liepāja with the official afterparty until sunrise!

See you soon in *Rally Liepāja!*

Raimonds Strokšs

Director of Rally Liepāja



1.2 COME TO LIEPĀJA AND NEVER FORGET IT!

Liepāja has changed a lot in the past few years. We have become a modern and contemporary twenty-first century city with a global influence, confirmed by the wide offering of international sports events, performances by local and foreign artists, as well as the modern and innovative companies and the services they provide. What has not changed is the desire of Liepāja inhabitants to do more, and do it better.

The reason behind this rapid improvement is simple – Liepāja is natural and open, so the people living here can afford to be less formal and more creative. Yes, there are times when Liepāja inhabitants are direct and rebellious, but that is only because they are never fully satisfied with themselves, and continuously challenge themselves and the opinions and creations of others, in the pursuit of an even better result.

The foundation of everything is the unique urban environment – everything has been thought over, and the city of wind is perfectly suited for living, work and self-actualization. Liepāja environment and mentality lets you clear your mind, develop and arrive at new thoughts and ideas, regardless of whether these ideas are large, with the potential to change the world, or personal, to improve your own day. People can come here to let off steam, look at things from a different perspective, recharge, experiment and create something new.

What is the unique phenomenon of this city? Its uniting element is wind, for which Liepāja has been known for years. However, this is not just a physical phenomenon, which makes you create something thorough and constantly brings something new. This is a mentality that always makes you adapt, rebel and see things from a non-traditional perspective, while stubbornly completing your task until its finish, not just to rebel for rebelling's sake.

Cannot believe it? Come and check yourself! Come to Liepāja! Only then will you understand Liepāja! See for yourself. Feel for yourself. Forget your everyday problems. And, of course, fall in love. Come! You will never forget it. Liepāja.



Liepāja

kalendars.liepaja.lv
All events together



1.3 SHINE IN TALS!

Courage. Meaningfulness. Humanity.

Those are the three pillars of the Talsi region, which enables us – talented doers and courageous dreamers – to crackle with energy and determination. Talsi region inhabitants are gifted with the directness that is characteristic of Kurzeme region inhabitants, endowed with self-respect and confidence, to go and do things, instead of just sitting on the sidelines!

Talsi is the heart of our region. A city enclosed by nine hillocks and beautiful views, a rich cultural history and a thoughtful offering of culture and sports events.

Climbing a mountain and seeing a different perspective is something Talsi offers every day. Here, you can feel inspiration in the Talsi Folk House's Creative yard, get a feel for the joy of crafts in "Patrepe" and see its beauty in the crowns and skirts of Ķēniņmeitas (King's daughters). Here, you can make sure that life is all about movement, and dive into the Talsi hillock treasure search, breathing in their charm and understanding the mystery of nature. We even have our own taste – mixing the sourness of sea buckthorns, sweetness of honey and the thoroughness of bread!

Talsi is infrastructure. Ever on the road to improvement: educational institutions, roads and streets, culture and sports infrastructure, architecture and its smaller forms. The city is never ready, as it is continuously breathing and developing.

Talsi is people. Active entrepreneurs, talented culture creators, capable athletes and sports enthusiasts, great educational workers, tenacious farmers, brave teenagers and sincere children. All together and each one separately.

We do everything to make sense – for it to shine and sparkle! Find your inner glow in Talsi and its region!





TALSU
NOVADS

- ATRODI PĒRLES TALSU NOVADĀ

VASARAS SEZONAS ATKLĀŠANAS
LIELKONCERTS
"ZVAIGZNES VIRS
TALSĪEM"
SAULESKALNA ESTRĀDĒ



25. MAIJS



TAUTAS DEJU FESTIVĀLS
"LATVJU BĒRNI
DANCI VEDA"

31. MAIJS

KOMPONISTA
RAIMONDA TIGULA
ĀRPASAULES
MŪZIKA
TIGUĻKALNĀ



1. JŪNIJS



CROSS COUNTRY
LATVIJAS
ČEMPIONĀTA
POSMS STENDĒ

8. JŪNIJS

TALSU
PILSĒTAS SVĒTKI-
VASARAS VIDUS
SVINĒŠANA



5. - 7. JŪLIJS



SABILES
VĪNA SVĒTKI

24. - 28. JŪLIJS



DIŽMĀRAS
GADATIRGUS

17. AUGUSTS

ABAVAS SENLEJAS
CEĻOTĀJU DIENAS



24. AUGUSTS



MAZIE
OPERMŪZIKAS
SVĒTKI LAIDZE

31. AUGUSTS

KURZEMES
DZEJAS DIENAS
TALSOS



14. - 15. SEPTEMBRIS



KARSTVĪNA
SVĒTKI SABILĒ

7. DECEMBRIS

STRAŽDES
MUIŽAS RŪKU
ZIEMASSVĒTKU
BURZIŅŠ 2019



16. - 22. DECEMBRIS



TALSU
NĀKTSTURNĪRS

25. DECEMBRIS

JAUNĀ GADA
SAGAIÐĪŠANA
TALSOS



31. DECEMBRIS

VAIRĀK INFORMĀCIJAS:



www.talsi.lv
www.talsitourism.lv



@Talsunovads
@TalsiTourism



1.4 ITINERARY

Rally Liepāja competitive distance will be just above 200 km (850 km including liaison distance). The rally will begin on Friday, 24th of May, with qualifying nearby Liepāja, and evening opening ceremony including start position selection for priority drivers and ceremonial start in Liepāja. Saturday, 25th of May, will host Leg 1 and special stages organized in Talsi Region, while Sunday, 26th of May, will give room for the decisive special stages in the vicinity of Liepāja, as well as prize giving ceremony.

1.5 REGULATORY POWER OF THIS DOCUMENT

This document has no regulatory power – it is just for information only. All information can be changed or added; updates will be published on www.lvrally.com.

2 CONTACT DETAILS

2.1 RALLY ORGANISERS REQUISITES

RA EVENTS, SIA Reg. No. 41203049203; VAT Reg.No. LV41203049203
 Legal Address: Celtnieku Street 23, Talsi, LV-3201, Latvia
 Bank: Luminor Bank AS; SWIFT: NDEALV2X
 Account No.: LV48NDEA0000084522287

2.2 RALLY ORGANISERS OFFICE

Address: Melnsila Street 10B, Riga, LV-1046, Latvia
 Open on working days from 10:00 till 17:00
 E-mail: info@raevents.lv; Internet: www.lvrally.com

2.3 RALLY ORGANISERS CONTACT DETAILS

Director	Raimonds Strokšs	+371 29247514	raimonds@raevents.lv
Technical Director	Kaspars Ērkulis	+371 22309446	kaspars@raevents.lv
Marketing Director	Inga Brūdere	+371 27072012	inga@raevents.lv
Media Officer	Jānis Unbedahts	+371 26557801	janis@raevents.lv
Project Manager	Jānis Strauts	+371 26306443	janis.strauts@raevents.lv

2.4 RALLY OFFICIAL PERSONS

Director	Raimonds Strokšs	+371 29247514
Clerk of the Course	Jānis Krastiņš	+371 29121222
Competitors Relations Officer	Māris Kulšs	+371 29360050
Competitors Relations Officer	Jan Regner	+371 25663335 (from 22.05.2019.)
National Media Relations Officer	Jānis Unbedahts	+371 26557801

2.5 RALLY CENTRE

Date:	Time:	Place:
22 May, 2019	18:00-22:00	Liepāja Olympic Centre, Brīvības Street 39, Liepāja
23 May, 2019	07:00-20:00	Liepāja Olympic Centre, Brīvības Street 39, Liepāja
24 May, 2019	08:00-20:30	Liepāja Olympic Centre, Brīvības Street 39, Liepāja
25 May, 2019	08:00-23:30	Liepāja Olympic Centre, Brīvības Street 39, Liepāja
26 May, 2019	07:00-20:00	Liepāja Olympic Centre, Brīvības Street 39, Liepāja

Electronic Official notice board (ONB) will be placed on – www.autorally.lv.

Tu izvēlies jaudu. Mēs radām tev *Futura 98*



dinamika
Futura 95

jauda
Futura 98

efektivitāte
Futura D

pārākums
PRO DIESEL

atjaunojamā
NESTE MY

Rallijs ir zirgspēku cīņa. Sasniegt finišu var ikviens, taču uzvarēt - vien retais. Šajā cīņā mēs palīdzam ar degvielu, kas sniedz dzinējam dinamiku un pārākumu.

Lai kāds būtu tavs izvēlētais ceļš, mēs esam radijuši tam degvielu. Uzpildi sev piemērotāko jebkurā no Neste stacijām!

Degvielai
**īpaša
cena**

Neste Liepāja un
Neste Talsi
24.05.-26.05.

neste.lv

NESTE
Tiem, kas ceļā

3 PROVISIONAL PROGRAMME, CRITICAL DEADLINES

3.1 SCHEDULE BEFORE THE RALLY WEEK

Monday, 25 March, 2019	
15:00	Publication of Rally Supplementary Regulations
15:00	Opening date for entries
Monday, 22 April, 2019	
15:00	Closing date for discounted entry fee
15:00	Closing date for helicopter registration
Thursday, 9 May, 2019	
15:00	Closing date for entries
15:00	Closing date for additional space and other requests for service areas
15:00	Publication of the Road Book and maps
Friday, 10 May, 2019	
15:00	Publication of Rally Guide 2
Wednesday, 5 May, 2019	
15:00	Publication of the provisional starting order
Information published on www.autorally.lv , www.lvrally.com	

3.2 SCHEDULE OF THE RALLY WEEK

Wednesday, 22 May, 2019		
18:00-22:00	Optional administrative checks, Road Book and GPS distribution	Liepāja, Brīvības Street 39
Thursday, 23 May, 2019		
07:00-20:00	Optional administrative checks, Road Book and GPS distribution	Liepāja, Brīvības Street 39
till 20:00	Closing date for co-drivers details	Liepāja, Brīvības Street 39
08:00-21:00	Reconnaissance	See Appendix 2
09:00	Opening of Press Centre and media accreditation	Liepāja, Brīvības Street 39
20:00	ERC Team Managers` briefing	Liepāja, Brīvības Street 39
Friday, 24 May, 2019		
07:00-14:00	Technical scrutineering, marking, and sealing	Liepāja, Brīvības Street 148A
08:00-16:00	Reconnaissance	See Appendix 2
08:00-17:00	Returning of Recce cards, checks of driver's licenses after Reconnaissance	Liepāja, Brīvības Street 39
14:30-16:40	Free practice for Priority drivers	Liepāja Region, Dunalka Parish
16:00	Publication of starting order list for Qualifying stage	Liepāja, Brīvības Street 39
16:57-18:40	Qualifying stage for Priority drivers	Liepāja Region, Dunalka Parish
18:40-19:40	Shakedown stage for Non-Priority drivers	Liepāja Region, Dunalka Parish
19:15	Publication of provisional Qualifying stage results	Liepāja, Brīvības Street 39
19:15	Publication of the list of arrival times in pre-start area for Non-Priority drivers	Liepāja, Brīvības Street 39
20:00	Selection of starting positions for TOP 15 Priority drivers	Liepāja, Brīvības Street 55

Friday, 24 May, 2019		
20:30	Ceremonial start of the rally, first car on podium following by parade drive through the city of Liepāja (in groups by 10 cars with police escort)	Liepāja, Brīvības Street 55
23:00	Publication of starting list for Section 1	Liepāja, Brīvības Street 39
Saturday, 25 May, 2019		
11:20	Start of Leg 1 TC0	Talsi Airfield, Ģibuļi parish
20:45	Finish of Leg 1 TC5C	Liepāja, Jelgavas Street
23:00	Publication of starting list for Leg 2	Liepāja, Brīvības Street 39
Sunday, 26 May, 2019		
6:00-06:30	Scrutineering of restarting cars	Liepāja, Jelgavas Street
7:30	Start of Leg 2 TC5D	Liepāja, Jelgavas Street
from 19:05	Podium Finish TC13D and Prize giving ceremony	Liepāja, Brīvības Street 55
from 19:05	Parc Fermè after finish	Liepāja, Brīvības Street 55
from 19:15	Final Scrutineering	Liepāja, Zemnieku Street 68
20:30	Post-event press conference	Liepāja, Brīvības Street 39
21:00	Posting of the provisional final classification	Liepāja, Brīvības Street 39
21:30	Posting of the official final classification	Liepāja, Brīvības Street 39

Dear Competitors, please be advised that TC0 is located in Talsi. All competitors are allowed to transport their competition cars to TC0 on trailers.

4 ENTRY DETAILS

4.1 CHAMPIONSHIPS AND TITLES

4.1.1 FIA titles for which the rally counts:

FIA European Rally Championship for Drivers and Co-drivers
 FIA European Rally Championship for Teams
 FIA ERC 2 Championship for Drivers and Co-drivers
 FIA ERC 3 Championship for Drivers and Co-drivers
 FIA ERC 1 Junior Championship
 FIA ERC 3 Junior Championship
 FIA European Rally Trophy Baltic Rally Trophy for Drivers and Co-drivers
 FIA BRT 2 Trophy for Drivers and Co-drivers
 FIA BRT 3 Trophy for Drivers and Co-drivers
 FIA BRT Junior Trophy for Drivers
 ABARTH Rally Cup

4.1.2 Other titles for which the rally counts:

Latvian Rally Championship 3rd and 4th event

4.2 CRITERIA FOR ACCEPTANCE OF ENTRIES

The number of entrants is limited to 5 cars. If more than 75 entries are received, the Organiser reserves the sole right to decide which entries among the non-priority drivers will be accepted.

4.3 ENTRY FEES

Discounted entry fee till 22.04.2019:	
ERC; ERC2; ERC3 entrants with private licenses; - Above without Organiser's advertising	EUR 1900 (incl VAT 21%) EUR 3800 (incl VAT 21%)
ERC; ERC2; ERC3 entrants with legal licenses; - Above without Organiser's advertising	EUR 2400 (incl VAT 21%) EUR 4800 (incl VAT 21%)
ERC non-registered private entrants from LVA, LTU, EST ASN's - Above without Organiser's advertising	EUR 1200 (incl VAT 21%) EUR 2400 (incl VAT 21%)

Full entry fee till 09.05.2019:	
ERC; ERC2; ERC3 entrants with private licenses; - Above without Organiser's advertising	EUR 2400 (incl VAT 21%) EUR 4800 (incl VAT 21%)
ERC; ERC2; ERC3 entrants with legal licenses; - Above without Organiser's advertising	EUR 2900 (incl VAT 21%) EUR 5800 (incl VAT 21%)
ERC non-registered private entrants from LVA, LTU, EST ASN's - Above without Organiser's advertising	EUR 1700 (incl VAT 21%) EUR 3400 (incl VAT 21%)
FIA ERC 3 Junior Championship entrants - Above without Organiser's advertising	EUR 1200 (incl VAT 21%) EUR 2400 (incl VAT 21%)

Entry fee must be paid fully, including VAT 21%. Entry will be confirmed by publication of crew on official entry list. Entry will be published only after the payment has been received.

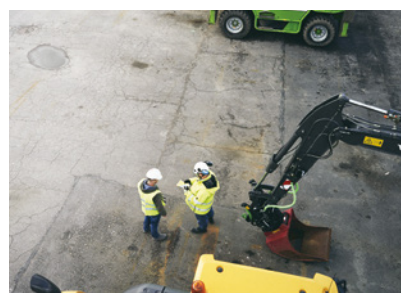
4.4 CONTENTS OF THE VARIOUS ENTRY PACKAGES

Package for the Team	ERC 1; ERC 2; ERC 3 Legal entrants	ERC 1; ERC 2; ERC 3 Private Entrants	ERC Juniors; Non-ERC Legal entrants	Non-ERC Private Entrants
Area in Service park	150m ² for 1 car +50m ² for each add. car	100m ² for 1 car +50m ² for each add. car	80m ² for 1 car +50m ² for each add. car	60m ² for 1 car
Standard depth of the service area – 10m. Service area reserved Latvian Rally Championship teams 10x7m (10m in depth), other LRC competitors – 9x6m (9m in depth). Additional space can be ordered for a price of 20EUR with VAT per 1 m ² for all the crews.*				
Service car plate	2	1	1	1
Remote Service car plate	1	1	1	1
Supp.Regulations	2	1	1	1
Road Book set	2	1	1	1
Rally Guide 2	2	1	1	1
Service road book	2	1	1	1
Rally car sticker set	1	1	1	1
Recce car stickers set	1	1	1	1
Crew passes	2	2	2	2
Non- permanent team passes	8	6	6	4

* must be approved by the rally organizer, see. Article 8.2.

Plašs būvtehnikas klāsts. Nomā punkti visā Latvijā.

Wide range of construction equipment. Rental outlets all around Latvia.



5 SCRUTINEERING, MARKING, AND SEALING

Date: 24 May, 2019 Time: 7:00-14:00 Place: Brīvības Street 148A, Liepāja

The time for scrutineering will be published together with provisional starting order and will be announced in rally web page. Any delay at scrutineering will be penalized by 30 EUR for each 10 minutes delayed. If the delay exceeds 30 min the crew will be reported to the Stewards. All cars entering a place of Scrutineering must have tyres in conformity with Latvian Road traffic regulations. Rally tyres with the studs are not allowed.

6 QUALIFYING STAGE/ SHAKEDOWN

All information about Qualifying Stage and Shakedown will be published in Rally Guide 2.

7 PARC FERMÉ

Date: 24 May, 2019 Place: Brīvības Street 55, Liepāja
25 May, 2019 Brīvības Street 55, Liepāja
26 May, 2019 Brīvības Street 55, Liepāja

8 SERVICE PARK

8.1 PLACE AND LOCATION

LIEPĀJA – Service B (Flexi), C, D, E

Date:	Time:	Place:
23 May, 2019	12:00-22:00	Jelgavas iela, Liepāja
24 May, 2019	08:00-22:00	Jelgavas iela, Liepāja
25 May, 2019	07:00-23:00	Jelgavas iela, Liepāja
26 May, 2019	06:00-24:00	Jelgavas iela, Liepāja

TALSI – Service A (Remote)

Date: 24 May, 2019 Time: 07:00-18:00 Place: Airfield, Ģibuļi parish, Talsi region

8.2 AREA AND UTILITIES

Any services ordered will be supplied only if the payment for those has been received in due time as stated in the invoice.

8.2.1 Service area

Any changes to service area must be approved by the representative of rally organizer no later than 9 May, 2019.

Additional space can be ordered for a price of EUR 20 (with VAT) per 1 m² for all the crews, prior informing the Manager of Service Park: **Mr. Ēriks Kriviņš, tālr. +37126635889.**

8.2.2 Electricity

There will be an opportunity provided to connect to the electric switchboard in the service park. Participants have to ensure electrical cables 80 meters in length. To apply for the electricity supply, send a request to info@raevents.lv no later than 9 May, 2019.

Competitors who will make unauthorised connection to the electric switchboard will be issued a fine of EUR 1 000,00.

1 phase outlet, 220V, 16A	till 22 April, 2019	till 9 May, 2019
FIA ERC registered crews	EUR 100,00	EUR 250,00
FIA ERC non-registered crews	EUR 250,00	EUR 350,00

3 phase outlet, 380V, 20A	till 22 April, 2019	till 9 May, 2019
FIA ERC registered crews	EUR 350,00	EUR 450,00
FIA ERC non-registered crews	EUR 500,00	EUR 650,00

8.2.3 Internet connection

For the use of competitors, Wi-Fi internet connection will be available at the service park. In order to access the service, please, submit the order form to info@raevents.lv no later than 9 May, 2019.

	till 22 April, 2019	till 9 May, 2019
FIA ERC registered crews	EUR 0,00	EUR 50,00
FIA ERC non-registered crews	EUR 50,00	EUR 100,00

9 OTHER INFORMATION TO COMPETITORS

9.1 TEST SESSIONS

Rally Liepāja competitors will have an option to take part in the official tests ahead of the competition. Also, upon request of competitor, a closed/private test session might be arranged. The request, including information of length of the stage and desired time, has to be sent to info@raevents.lv no later than 9 May, 2019. The amount of both test sessions – official, and private, is limited – please be advised to act timely to secure your place.

9.2 TRANSPORTATION TO TC0

Rally Liepāja competitors will have an optional service of transportation for their competition cars from rally city Liepāja to TC0, located in Talsi. The services are provided by a company *Kurbads*, having vast experience in sports car transportation, including one at FIA World Rallycross Championship, when 600hp *Supercar* vehicles were transported.

In order to access the service, please, write to info@raevents.lv no later than 9 May, 2019.

9.3 SERVICE PROCEDURE

A limitation for servicing, refuelling and changes of mechanical parts is introduced in FIA RRSR. Services B, C, D, and E can be entered only with Service car (SERVICE) and in Remote service A only with light service vehicles (REMOTE service car) – up to 6t weight, and 8m length.

Auxiliary or light service vehicles with stickers (REMOTE service car) are not allowed to enter in the main Service Park Liepāja. These vehicles will access the main service area only before start of the rally just for loading operations.

9.4 SPEEDING

Please note that from the moment when the crew has received GPS devices until the GPS equipment will be handed over, the speed at which the crew drives the car on the public roads will be fixed continuously! In the case of exceeding the maximum authorized speed, Clerk of the Course will apply the appropriate penalty, in accordance with the regulations of the *Rally Liepāja*.

This regulation does not apply to the sports car speed during the rally in special stages.

In the event that any of the participants are checked by Latvian traffic police during the race and competitors need assistance, please contact the Competitors Relations Officer immediately.

9.5 TEAM PASS / WRISTBAND

Dear *Rally Liepāja* competitors, please inform your team members that they must wear issued FIA ERC or *Rally Liepāja* team pass / wristband at all times.

10 MEDIA

10.1 MEDIA CENTRE

Date:	Time:	Place:
23 May, 2019	09:00-22:00	Liepāja Olympic Centre, Brīvības Street 39, Liepāja
24 May, 2019	09:00-22:00	Liepāja Olympic Centre, Brīvības Street 39, Liepāja
25 May, 2019	08:00-22:00	Liepāja Olympic Centre, Brīvības Street 39, Liepāja
26 May, 2019	08:00-22:00	Liepāja Olympic Centre, Brīvības Street 39, Liepāja

10.2 PRESS CONFERENCES

Date:	Time:	Place:
24 May, 2019	19:30	next to <i>LOC Maneza</i> , Brīvības Street 55, Liepāja
26 May, 2019	20:30	Liepāja Olympic Centre, Brīvības Street 39, Liepāja

10.3 EXPECTED MEDIA COVERAGE

Rally review and highlights will be telecasted by the *Eurosport* media group.

10.4 EXPECTED RADIO COVERAGE

Rally coverage will also be provided by the official internet radio of the FIA European Rally Championship available on www.fiaerc.com.

11 MARKETING

11.1 PARTNERS ACTIVITIES IN THE SERVICE PARK

If you are interested to provide services or carry out any other activities at the service park, it must be approved by organisers of *Rally Liepāja*. Please address all your questions and / or requests to info@raevents.lv until 9 May, 2019.

Partners of the *Eurosport Events* have the opportunity to provide their services and / or to carry out marketing activities free of charge. The activities are subject to confirmation by the rally organiser.

Others interested in services and / or activities carried out in the service park will be charged in amount of EUR 500,00. In case unauthorised marketing, promotional, or other activities will be detected in the service park, rally organiser will issue a monetary fine for the activities carried in amount of EUR 3 000,00.

12 FESTIVAL OF SPEED – KURZEME

Let's go to Kurzeme!

When hearing that phrase, some Latvians will think that you are going on vacation in the western region of Latvia, but for motorsports fans, the word *Kurzeme* has been synonymous with one of the most famous motorsports events in the Baltics and beyond for more than 50 years.



Festival of Speed first took place in 2010, with the goal of bringing multiple motorsports disciplines to Liepāja – in these years, in addition to the top-level rally event, Liepāja has hosted drag racing, *SuperMoto*, *Lada RX*, rally supersprint for regular cars, *StreetBike Freestyle*, as well as speedboat competitions held on Liepāja Trade Channel, and historic *Youngtimer* regularity rally on the same special stages as for rally. A multitude of competitions, which have been watched by many local and international motorsports legends, as well as Latvia's senior government officials.

And 2019 will not be an exception, having Festival of Speed another successful year – with activities being help to be made public in due time.



13 RALLY CITY – LIEPĀJA



ENJOY AN UNFORGETTABLE HOLIDAY IN THE MOST CHARMING CITY IN THE BALTICS – LIEPĀJA!

Liepāja combines world level ambition with the conveniences of a small city. The city has its own charm, an aura that invites to follow the wind – to enjoy, feel, create and let your spirit rise above the everyday issues.

1. Enjoy the culture and be inspired in the best concert hall in the Baltics!

The symbol of culture in Liepāja is the *Great Amber* concert hall, which is a jewel of Liepāja, the Kurzeme region, Latvia and even the Baltics. In an average year, artists from more than 60 countries perform in Liepāja. In addition to that, you can also enjoy theatre performances in Liepāja theatre, which is the oldest in Latvia. You can also visit the Liepāja museum or be inspired in the concerts of the Liepāja symphony orchestra.

2. Get away from the city and visit Karosta!

Liepāja environment and mentality lets you clear your mind, develop and arrive at new thoughts and ideas. Get wind in your hair in Karosta, walk by the sea or by the lake. Let off some steam, see things from a different perspective, recharge, experiment and create something new.

3. Enjoy the white sand beach

Liepāja is proud of its beach – completely natural, unbuilt, with the finest and whitest sand. After storms, you can occasionally find larger or smaller ambers in the beach, which have washed ashore along with sea algae and seashells.

4. Smart choice for conferences and seminars

Liepāja offers premises and services suitable for corporate events, seminars and conferences. There are also lots of choices for accommodations and food. In total, Liepāja can accommodate more than 6400 guests attending corporate events.

5. Enjoy unique tastes in the charming and romantic Liepāja restaurants

Liepāja has more than its fair share of charming cafes and tasteful restaurants. There are lots of food lovers, which has resulted in the availability of cuisines from many countries. The city of wind has a total of 18 restaurants, 40 cafes, bistros and summer cafes. The official food of the city is *Liepājas mencīni* – made from smoked cod, potatoes and onions, following an old Dienvidkurzeme recipe. Liepāja is the only place in the world where you can try this food.

6. Stay at a stylish hotel!

Liepāja has a wide array of hotel offerings – from a five-star hotel next to the Promenade, to classic business style and specially designed hotels that are located in old factories. Liepāja has 15 hotels, 10 guest houses, hostels and camping sites, as well as numerous apartments where you can enjoy a fantastic atmosphere.

7. Around 140 events each month

Liepāja is the culture capital of Latvia – it has a rich tradition of culture, varied modern entertainment options, a comprehensive culture offering, artists from all over the world, as well as many options for getting involved in the culture life of Liepāja. On average, there are 140 events in Liepāja in a month, giving everyone a chance to find something to their taste.

All the events can be viewed at kalendars.liepaja.lv



13.1 LIEPĀJA OLYMPIC CENTRE

Liepāja Olympic Centre (LOC) is one of the most modern and multifunctional sports, culture, recreation and education management complexes. It consists of the Olympic Centre, containing halls catered to various sports and culture events, the largest and most modern *LOC Pool&SPA* centre in the Kurzeme region with two pools and a relaxation zone, the *LOC Manege* with athletics sectors and a sports field, as well as the *LOC Ledus HALLE* (ice arena) which hosts hockey games of various levels. Currently, the *LOC Tennis Arena* is in the final stages of construction, with the up-and-coming tennis stars soon being able to practice on contemporary courts.

LOC offers a place for sports, culture, relaxation and educational activities with the goal of promoting a healthy lifestyle.

Address: Brīvības Street 39, Liepāja, LV-3401

Phone: + 371 6348 3888

E-mail: info@loc.lv



13.2 FACTS ABOUT LIEPĀJA

Town Rights: 1625

Coordinates: 56° 30' 42" N, 21° 0' 50" E

Area: 60,4 km²

Population: 69 433 (2017)

Internet: <http://www.liepaja.lv>

14 ACCOMMODATION

14.1 LIEPĀJA

Hotel Promenade Hotel 5*

Address: Vecā Ostmala 40, Liepāja

Phone: +371 63488288

E-mail: info@promenadehotel.lv

Internet: www.promenadehotel.lv

Hotel Līva 3*

Address: Lielā Street 11, Liepāja

Phone: +371 63420102, +371 29163686

E-mail: info@liva.lv

Internet: www.livahotel.lv

Apartments Liepājā

Internet: www.apartmenti.lv

More info Liepāja Region Tourism Information Centre:

Address: Rožu Square 5/6, Liepāja

Phone: +371 63480808, +371 29402111

E-mail: info@liepaja.travel

Internet: <http://liepaja.travel/>

Hotel Europa City Amrita 4*

Address: Rīgas Street 7, Liepāja

Phone: +371 63480888, +371 22054688

E-mail: liepaja@europacity.lv

Internet: www.europacity.lv

Hotel SportHotel 3*

Address: Dzērves Street 9, Liepāja

Phone: +371 63432005, +371 20255334

E-mail: info@sporthotel.lv

Internet: www.sporthotel.lv

14.2 TALSI

Hotel Talsi

Address: Kareivju Street 16, Talsi

Phone: +371 26322333, +371 63232020

E-mail: hoteltalsi@hoteltalsi.lv

Internet: <http://www.hoteltalsi.lv/>

More info Talsi Region Tourism Information Centre:

Address: Lielā Street 19/21, Talsi

Phone: +371 63224165, +371 26469057

E-mail: tic@talsi.lv

Internet: <http://www.talsitourism.lv/>

14.3 SKRUNDA

Hotel Piena Muiža Berghof

Address: Kalnamuiža, Sieksāte, Rudbārži parish, Skrunda region

Phone: +371 26518660

E-mail: piens@pienamuiza.lv

Internet: www.pienamuiza.lv

Boutique Hotel Skrundas Muiža

Address: Pils Street 2, Skrunda, Skrunda region

Phone: +371 63370000; +371 22113355

E-mail: office@skrundasmuiza.lv

Internet: <https://www.skrundasmuiza.lv/>

15 USEFUL SERVICES

15.1 CONTI STL – CUSTOMS

All questions regarding the customs clearance and declaration of excise goods please ask customs broker company.

Address: Bērzaunes Street 11A, Rīga, LV-1039, Latvia

Mobile: +371 29121222, E-mail: janis@contistl.com

15.2 4X4 KLUBS – OFFROAD EVACUATION

Off-road evacuation, pulling car to the road with hard surface

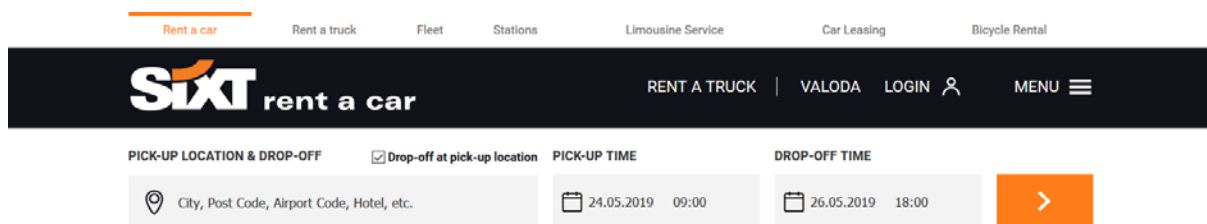
Address: Praulienas Street 16-16, Riga, Latvia

Mobile: +371 29996978, E-mail: andris@4x4klubs.lv

Internet: <http://www.4x4klubs.lv>

15.3 SIXT - CAR RENTAL COMPANIES

Internet: <http://www.sixt.lv>



The screenshot shows the SIXT car rental website interface. At the top, there are navigation tabs: "Rent a car" (highlighted), "Rent a truck", "Fleet", "Stations", "Limousine Service", "Car Leasing", and "Bicycle Rental". Below the navigation is a dark header with the SIXT logo and "rent a car" text, along with links for "RENT A TRUCK", "VALODA", "LOGIN", and "MENU". The main content area includes a search form with the following fields: "PICK-UP LOCATION & DROP-OFF" (with a location pin icon and placeholder text "City, Post Code, Airport Code, Hotel, etc."), "Drop-off at pick-up location" (checked), "PICK-UP TIME" (calendar icon, "24.05.2019 09:00"), and "DROP-OFF TIME" (calendar icon, "26.05.2019 18:00"). An orange arrow button is on the right side of the form.

15.4 TAXI

15.4.1 Liepāja

Baltic Taxi +371 20008500



Choose *Baltic Taxi*. During *Rally Liepāja*, *Baltic Taxi* rides will be even more favourable. Call for your taxi, use special code **RALLY**, and receive the best offer! *Baltic Taxi* provides quality service, and is a trustworthy partner with attention to every client – servicing you with well equipped, safe, and comfortable *Toyota Verso* and *Mercedes Benz* cars, no older than 2016.

Offer valid from 20 May, 2019, till 27 May, 2019. Convenient and fast response 24/7.

15.4.2 Talsi

2 ABC Taxi +371 26101001

**Official
car rental
partner**



**Drive first class,
pay economy.**

(Book your car on [sixt.lv](https://www.sixt.lv) or call +371 67207121)

16 GETTING TO RALLY LIEPĀJA

16.1 AIR SERVICES

16.1.1 Riga International Airport (RIX)

Phone: +371 29311187 (pay phone)

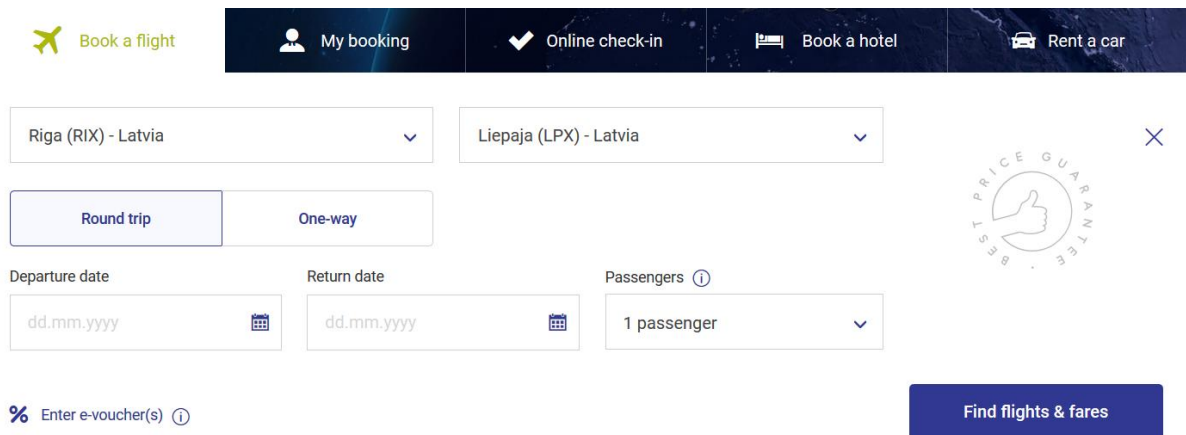
Internet: <http://www.riga-airport.com>

16.1.2 National airline airBaltic (BT)

Phone: +371 90001100

Internet: <http://www.airbaltic.com>

National airline *airBaltic* provides direct flights from Riga to Liepaja making the travel that much cosier. For full list of available flights head to the webpage of *airBaltic*.



The screenshot shows the airBaltic website's flight booking interface. At the top, there are navigation buttons: 'Book a flight', 'My booking', 'Online check-in', 'Book a hotel', and 'Rent a car'. Below this, there are two dropdown menus for origin and destination, both set to 'Riga (RIX) - Latvia' and 'Liepaja (LPX) - Latvia' respectively. There are buttons for 'Round trip' and 'One-way'. Below these are fields for 'Departure date' and 'Return date', both with a calendar icon and the placeholder 'dd.mm.yyyy'. There is also a 'Passengers' dropdown menu set to '1 passenger'. At the bottom left, there is a field for 'Enter e-voucher(s)'. At the bottom right, there is a blue button labeled 'Find flights & fares'. A circular seal on the right side of the form reads 'BEST PRICE GUARANTEE'.

16.1.3 Other direct airlines

Aeroflot	aeroflot.com	RusLines	rusline.aero
Belavia	belavia.by	SAS Scandinavian Airlines	flysas.com
Get Jet Airlines UAB	-	Smartlynx	smartlynx.aero
Finnair	finnair.com	Turkish Airlines	turkishairlines.com
LOT	lot.com	Ukraine International Airlines	flyuia.com
Lufthansa	lufthansa.com	Utair Aviation	utair.ru/
Norwegian	norwegian.no	Uzbekistan Airways	uzairways.com
Ryanair	ryanair.com	Wizz Air	wizzair.com

16.2 SEA PORTS

Freeport of Riga

Tallink www.tallink.com

Rīga - Stockholm (Sweden)

Port of Liepāja

Stena Line www.stenaline.lv

Liepāja - Travemünde (Germany)

Ventspils Free Port

Stena Line www.stenaline.lv

Ventspils - Nynäshamn (Sweden)



17 EMERGENCY CONTACTS

If you need Ambulance, Police, or Fire brigade call 112!

This number is free of charge and is available even when you do not have a SIM card.

17.1 LIEPĀJA

17.1.1 Liepāja Municipal Police

Address: Jelgavas Street 48, Liepāja Phone: +371 63420269

17.1.2 Fire and Rescue Service, Kurzeme region brigade

Address: Ganību Street 63/67, Liepāja Phone: +371 63404475

17.1.3 Liepāja Regional Hospital, Emergency medical care department

Address: Slimnīcas Street 25, Liepāja Phone: +371 63403255

17.2 TALSI

17.2.1 Talsi Region Municipal Police

Address: Lielā Street 27, Talsi Phone: +371 63223748

17.2.2 Fire and Rescue Service, Kurzeme region brigade, Talsi section

Address: K. Valdemāra Street 94, Talsi Phone: +371 63291825

17.2.3 Ziemeļkurzeme Regional Hospital, Talsi branch

Address: Stendes Street 1, Talsi Phone: +371 63223350

18 USEFUL INFORMATION

18.1 CLIMATE

Latvia has a temperate, humid semi-continental climate that is characterized by warm summers, freezing winters and frequently high levels of humidity and precipitation. Latvia's weather conditions are influenced by the proximity of the Baltic Sea.

The rally will take place during late spring, with expected air temperature +8°C - +14°C. Please consult the weather forecast closer to the event and ensure proper clothing!

24 May, 2019: Sunrise at 5:05; Sunset at 22:01.

18.2 TIME ZONE

Latvia is placed in the East European Time zone (EET).

To get the correct time, please add 1 hour to Central European Time (CET) and 2 hours to Greenwich Mean Time (GMT).

18.3 ROAD RULES

Observe local specific rules and specially speed limits.

Speed Limits: City 50km/h Highway 90km/h

Speed cameras might be in use.

Driver and all passengers have to wear their seat belts at all times.

Vehicle lights must be on all the time throughout the year / 24 hours a day.

Using or holding a mobile phone in your hand while driving is prohibited. Hands free accessories are allowed to make and receive calls while driving.

To avoid parking fines, park only where it is permitted. Liepāja has paid parking zones.

The Police can order breathalyser tests of drivers. The maximum permitted level of alcohol in the bloodstream is 0,05%, for drivers with less than two years of drivers experience 0,02%.

18.4 POWER SUPPLY

220 Volt, 50Hz. Europlug compatible with two round pins.

18.5 CURRENCY EXCHANGE (APPROXIMATELY)

1 EUR = 1,96 BGN	1 EUR = 1,13 CHF	1 EUR = 25,63 CZK	1 EUR = 7,47 DKK
1 EUR = 0,90 GBP	1 EUR = 321,16 HUF	1 EUR = 9,75 NOK	1 EUR = 4,30 PLN
1 EUR = 4,68 RON	1 EUR = 77,25 RUB	1 EUR = 10,23 SEK	1 EUR = 1,15 USD

FIA WORLD RALLYCROSS CHAMPIONSHIP ROUND

NESTE WORLD RX OF LATVIA

CSDD BIKERNIEKI TRACK, RIGA // 14.-15.09.2019.

NESTE WORLD RALLYCROSS OF **LATVIA**

ARE YOU READY TO RACE?!



19 UTILITIES ORDER FORM OF SERVICE AREA

Crew

Entrant		
Number of crews entered		
Driver		
Co-driver		
FIA ERC registered crew	Yes	No

In service park to be placed together with crews

--

Required utilities of service area

Extra service area (m ²)		
Electricity outlet, 1-phase, 220V, 16A	Yes	No
Electricity outlet, 3-phase, 380V, 20A	Yes	No
Wi-Fi Internet connection	Yes	No

Invoice details

Payer	
Registration number (legal person)	
VAT number (legal person)	
Address	
Phone	
E-mail	

Contact details

Name Surname	
Phone	
E-mail	

Date of submission	
Name, Surname	
Signature	

For prices of the selected services please consult section No. 8 Service Park.

Filled-in order form, till 9 May, 2019 should be sent to info@raevents.lv.
By submitting this form, you confirm to pay the price of selected services.



20 HELICOPTER REGISTRATION FORM

Registration for using the Helicopter during *Rally Liepāja*:

Entrant: _____

The aim of using Helicopter: _____

Date and time of using the Helicopter:

. .

From: :

Till: :

. .

From: :

Till: :

Information about the Helicopter:

Type and make: _____

Country identity and registration sign: _____

Information about the pilot of the Helicopter:

Name, Surname: _____

ID code: _____

Phone No.: _____

The appropriate Qualification
certificate for the pilot: _____

Period of validity of the certificate: _____

3rd person insurance policy No.: _____

Period of validity of the insurance policy: From DD/MM/YYYY Till DD/MM/YYYY

The Pilot of the Helicopter must follow the current rules of Republic of Latvia regulating the air traffic. Rules of Latvian Rally Regulations that refer to the service and crew personnel action during the rally also have to be followed. Helicopters are allowed to land during the rally in places which are previously coordinated with the Organiser. Helicopters are not allowed to land in places which are nearer than 100 m from any marshal points in the rally route.

By submitting this application to the Organiser of the *Rally Liepāja* hereby confirm that information provided in this application is true.

I hereby pledge to follow and obey all current laws and regulations of Republic of Latvia regarding the safe air traffic and aircrafts.

Date

Signature

Name, Surname



RALLY LIEPĀJA

TALSI-LIEPĀJA | LATVIA | 2019

SINCE 2013